



Your manager

**Jenny**

[jenny@discoveryrussia.com](mailto:jenny@discoveryrussia.com)

### Official address in Russia

Russia, Moscow, 107140,  
Lesnoryadsky  
side street, 18 build 2  
Office 310

Russian Federal  
Registry of Tour Operators:

PTO 019668  
TUR IST LLC



Russia: + 7 499 380 7154  
Australia: +61 2 8310 7667  
Canada: +1 888 644 87 34  
New Zealand: +64 428 07 471  
UK & Europe: +44 20 3608 2859  
USA: +1 646 751 78 53

ABN: 39 616 347 150

[www.discoveryrussia.com](http://www.discoveryrussia.com)



★★★★★ 4,8 out of 5

# Hunting the Northern lights

## Kola Peninsula

### 4 days / 3 nights

This package is available as Private Tour

Murmansk– Teriberka - Lovozero - Saami Village - Murmansk







## Official address in Russia

Russia, Moscow, 107140,  
Lesnoryadsky  
side street, 18 build 2  
Office 310

Russian Federal  
Registry of Tour Operators:

PTO 019668  
TUR IST LLC



Russia: + 7 499 380 7154  
Australia: +61 2 8310 7667  
Canada: +1 888 644 87 34  
New Zealand: +64 428 07 471  
UK & Europe: +44 20 3608 2859  
USA: +1 646 751 78 53

ABN: 39 616 347 150

[jenny@discoveryrussia.com](mailto:jenny@discoveryrussia.com)

[www.discoveryrussia.com](http://www.discoveryrussia.com)

## What our travelers say





## Official address in Russia

Russia, Moscow, 107140,  
Lesnoryadsky  
side street, 18 build 2  
Office 310

Russian Federal  
Registry of Tour Operators:

PTO 019668  
TUR IST LLC



Russia: + 7 499 380 7154  
Australia: +61 2 8310 7667  
Canada: +1 888 644 87 34  
New Zealand: +64 428 07 471  
UK & Europe: +44 20 3608 2859  
USA: +1 646 751 78 53

ABN: 39 616 347 150

[jenny@discoveryrussia.com](mailto:jenny@discoveryrussia.com)  
[www.discoveryrussia.com](http://www.discoveryrussia.com)

# Itinerary

## DAY 1

- *Arrive at Murmansk*
- *Check- in at hotel in Murmansk*
- *Murmansk city tour*

## DAY 2

- *Breakfast*
- *Transfer to Teriberka village*
- *Teriberka village tour*
- *Dinner at Tundra Park (optional)*
- *Northern lights hunting*
- *Transfer back to Murmansk*
- *Overnight in Murmansk hotel*

## DAY 3

- *Breakfast*
- *Transfer to Lovozero*
- *Check-in at Saam village*
- *Saami village tour with lunch, deer feeding*
- *Dinner*
- *Northern lights hunting*

## DAY 4

- *Breakfast*
- *Snowmobile safari*
- *Husky dog sledding*
- *Transfer back to Murmansk airport*







### Official address in Russia

Russia, Moscow, 107140,  
Lesnoryadsky  
side street, 18 build 2  
Office 310

Russian Federal  
Registry of Tour Operators:

PTO 019668  
TUR IST LLC



Russia: + 7 499 380 7154  
Australia: +61 2 8310 7667  
Canada: +1 888 644 87 34  
New Zealand: +64 428 07 471  
UK & Europe: +44 20 3608 2859  
USA: +1 646 751 78 53

ABN: 39 616 347 150

[jenny@discoveryrussia.com](mailto:jenny@discoveryrussia.com)  
[www.discoveryrussia.com](http://www.discoveryrussia.com)

## Day 1: Murmansk, gate to Arctic

Arrival at Murmansk. Meet & greet at the airport. Murmansk is the largest city in the world north of the Arctic Circle. Founded in 1915 as a supply port in World War I, it was a base for the British, French, and American expeditionary forces against the Bolsheviks in 1918.

Murmansk played an important role as a Russian trade link with the Allies during the Second World War II. Various supplies were brought to the city with the help of the Arctic convoys. Murmansk was heavily damaged during the war. It was restored in the beginning of the 1950ies.

Arctic & Antarctica museum visit & city tour. We will visit the monument to the Defenders of the Polar Region (Alyosha), fragment of conning tower of nuclear submarine «Kursk» and the Lighthouse — a memorial dedicated to the memory of sailors who died in peacetime and enjoy a beautiful panoramic view to Murmansk and the Kola bay from viewpoint.

Accommodation in a comfortable 4\* Azimut hotel .



### Official address in Russia

Russia, Moscow, 107140,  
Lesnoryadsky  
side street, 18 build 2  
Office 310

Russian Federal  
Registry of Tour Operators:

PTO 019668  
TUR IST LLC



Russia: + 7 499 380 7154  
Australia: +61 2 8310 7667  
Canada: +1 888 644 87 34  
New Zealand: +64 428 07 471  
UK & Europe: +44 20 3608 2859  
USA: +1 646 751 78 53

ABN: 39 616 347 150

[jenny@discoveryrussia.com](mailto:jenny@discoveryrussia.com)  
[www.discoveryrussia.com](http://www.discoveryrussia.com)

## Day 2: Teriberka Tour & The Ocean

Today we reach the shores of the Arctic Ocean (Barents Sea), 75km drive. Fascinating Arctic nature is the best feature, although there are also plenty of historical and cultural highlights to visit.

Parts of the arctic flora, fauna and the splendid northern landscape, recently appeared in the famous Russian movie "Leviathan" and have started to attract more and more visitors. Here you will find yourself in the lost world on the shores of the Arctic Ocean.

Old wooden ships cemetery, beautiful sand beaches, abandoned historical part of the village, waterfall, battery of coastal defense, observation posts and strengthening of WWII.

On the way back to Murmansk stop at "Tundra Park" to have a dinner in the panoramic restaurant and have a chance to view the Northern lights while enjoying arctic traditional cuisine.

Overnight in Murmansk







### Official address in Russia

Russia, Moscow, 107140,  
Lesnoryadsky  
side street, 18 build 2  
Office 310

Russian Federal  
Registry of Tour Operators:

PTO 019668  
TUR IST LLC



Russia: + 7 499 380 7154  
Australia: +61 2 8310 7667  
Canada: +1 888 644 87 34  
New Zealand: +64 428 07 471  
UK & Europe: +44 20 3608 2859  
USA: +1 646 751 78 53

ABN: 39 616 347 150

[jenny@discoveryrussia.com](mailto:jenny@discoveryrussia.com)

[www.discoveryrussia.com](http://www.discoveryrussia.com)

## Day 3: Arctic Explorer tour / Northern Lights Hunting

Breakfast. Transfer to Lovozero to Saami village. Meet & greet in the Sami language, a guided tour around the settlement. Acquaintance with national Saami culture: plagues, kuvaksami and utensils; visiting the mall charmed idols.

Then, get to know about traditional Saami way of life and wildlife of the area (deer, elk, husky, foxes, foxes and rabbits). Feed a deer, play a Saami game "tug of Six", "deer and wolves", "Sami football", throw a wicker rings and more. Skate on a reindeer sleigh, skating on a snow banana, drive slides - feel yourself Saami! Lunch serving traditional meals "lim" (ear salmon), soft drink "Pakula ", black tea, Lovozersky bread, etc.

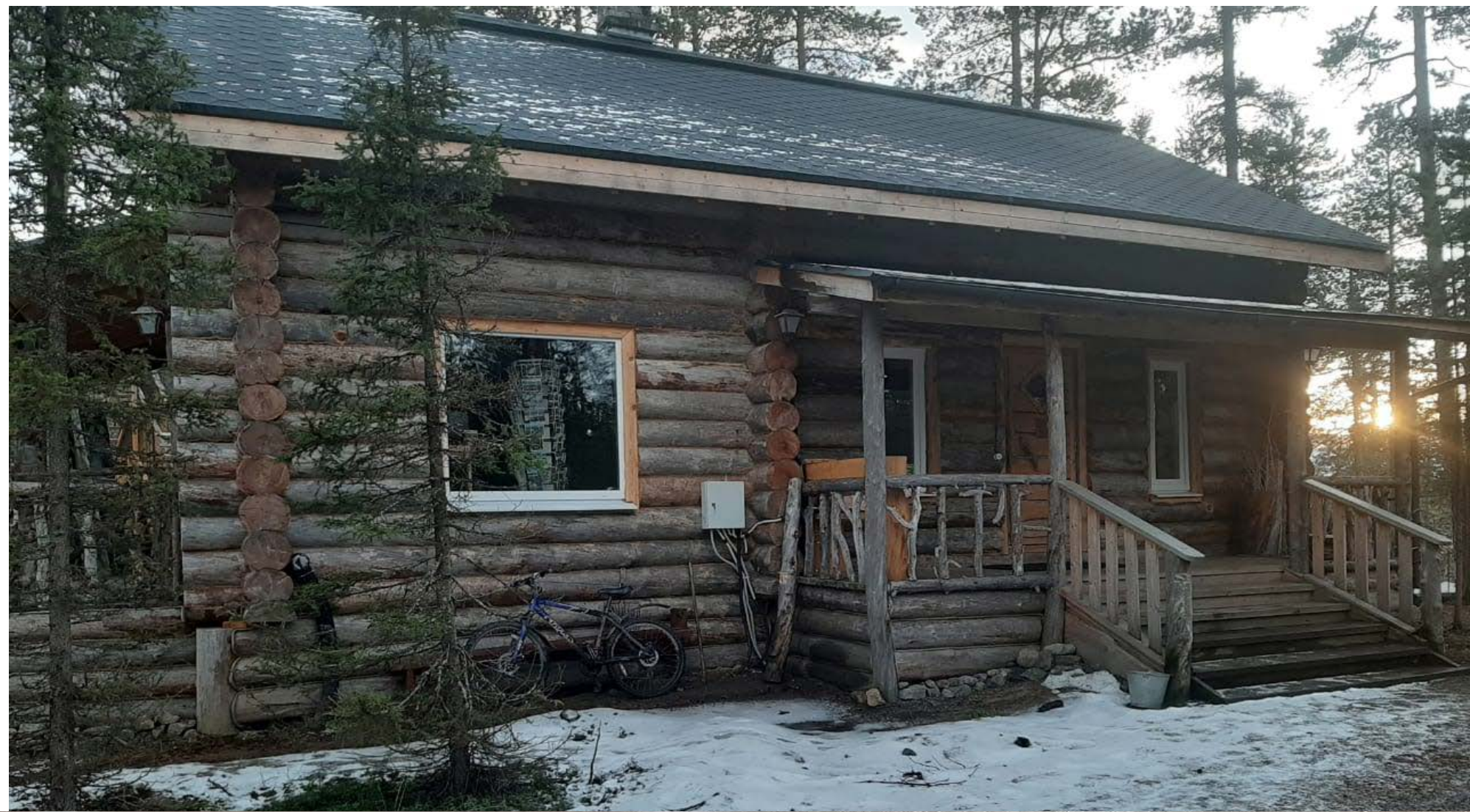
Make a colorful photos in a traditional clothes. Overnight in a traditional local Saami house.

Husky dogs sleigh tour.

In the evening Northern lights hunting. Optional glass dome diner experience.











## Official address in Russia

Russia, Moscow, 107140,  
Lesnoryadsky  
side street, 18 build 2  
Office 310

Russian Federal  
Registry of Tour Operators:

PTO 019668  
TUR IST LLC



Russia: + 7 499 380 7154  
Australia: +61 2 8310 7667  
Canada: +1 888 644 87 34  
New Zealand: +64 428 07 471  
UK & Europe: +44 20 3608 2859  
USA: +1 646 751 78 53

ABN: 39 616 347 150

[jenny@discoveryrussia.com](mailto:jenny@discoveryrussia.com)

[www.discoveryrussia.com](http://www.discoveryrussia.com)

## Day 4: Departure

Breakfast

Optional activities: snowmobiling, ice fishing, skiing

Return to Murmansk for the departure flight







### Official address in Russia

Russia, Moscow, 107140,  
Lesnoryadsky  
side street, 18 build 2  
Office 310

Russian Federal  
Registry of Tour Operators:

PTO 019668  
TUR IST LLC



**Russia:** + 7 499 380 7154  
**Australia:** +61 2 8310 7667  
**Canada:** +1 888 644 87 34  
**New Zealand:** +64 428 07 471  
**UK & Europe:** +44 20 3608 2859  
**USA:** +1 646 751 78 53

ABN: 39 616 347 150

[jenny@discoveryrussia.com](mailto:jenny@discoveryrussia.com)

[www.discoveryrussia.com](http://www.discoveryrussia.com)

## Dates & Rates

### Private Tour based on 2 people to go

### Rate per person, Russian Ruble



hotels

75, 750 RUB



hotels

80, 250 RUB





### Official address in Russia

Russia, Moscow, 107140,  
Lesnoryadsky  
side street, 18 build 2  
Office 310

Russian Federal  
Registry of Tour Operators:

PTO 019668  
TUR IST LLC



Russia: + 7 499 380 7154  
Australia: +61 2 8310 7667  
Canada: +1 888 644 87 34  
New Zealand: +64 428 07 471  
UK & Europe: +44 20 3608 2859  
USA: +1 646 751 78 53

ABN: 39 616 347 150

[jenny@discoveryrussia.com](mailto:jenny@discoveryrussia.com)

[www.discoveryrussia.com](http://www.discoveryrussia.com)

## Tour Inclusions

### ACCOMMODATION

- 1 night in Lovozero Saami Village, private 2-bedroom house  
(Hotel rooms available in a village 40 km from husky park. Please inquire)
- 2 nights in Murmansk 3\* or 4\* hotel of your choice

### MEALS

- 3 breakfasts
- 1 lunch (including degustation of national meals at Saami village)
- 1 dinner (in Saami village)

### TRANSPORTATION

- Meet at greet at the airport
- Private return airport transfers
- All land transfers as per program

### GUIDE

- English-speaking guide throughout the tour

### ACTIVITIES & SIGHTSEEING

**Please take note that due to logistic issues we might occasionally amend the sequence of the tours.**

- Murmansk city tour
- Lovozero tour: Saami village visit with deer feeding, photos in national costumes and Saami lunch in a chum
- Reindeer ride
- Teriberka Arctic Ocean tour with snowmobiling access to top attractions
- Husky dogs sleigh tour

### NOT INCLUDED

- Flight to Murmansk
- Porters
- Extras of personal nature
- Lunches and dinners not mentioned
- Travel insurance
- Rent of winter clothing is possible on site